

DWG. NO.  
SD-57989-001

SIMILAR ITEM

PROJECT NO.

B

DO NOT SCALE DRAWING  
DIMENSION IN METRIC

8 7 6 5 4 3 2 1

F

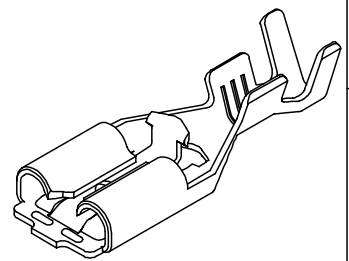
E

D

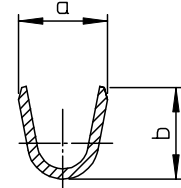
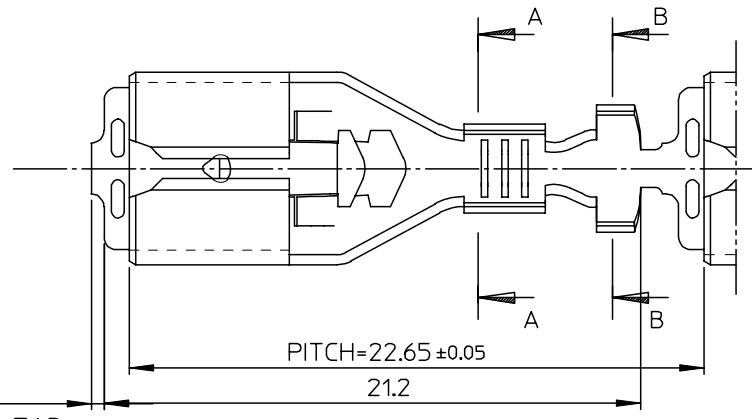
C

B

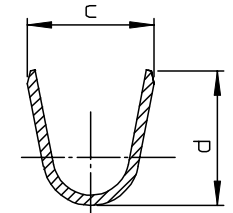
A



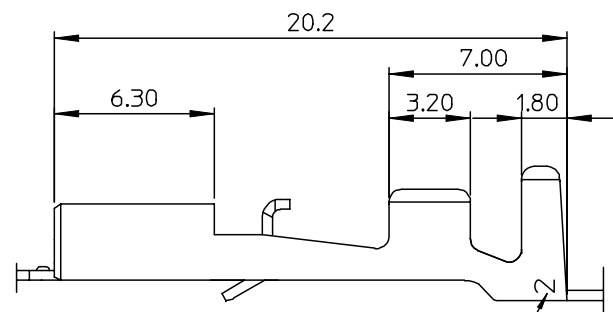
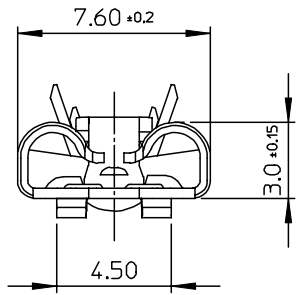
ISOMETRIC VIEW



SECTION D-D



SECTION E-E



MK2  
(TRADE MARK)

MATERIAL NO.	ENG NO.	a	b	c	d	WIRE SIZE
579899710	57989-9710	2.7	3.2	4.3	4.7	AWG #22-18
579899810	57989-9810	3.5	3.6	5.0	5.3	AWG #18-14
579899910	57989-9910	4.6	5.3	6.4	6.1	AWG #14-10

NOTES

- MATERIAL : BRASS, 0.4mm THICKNESS
- FINISH : PRE-TIN PLATING  
(1.0MICROMETER MIN. TIN OVER 0.3MICROMETER MIN. COPPER)
- MATING TAB : 0.8mmTHICKNESS, 6.35mm WIDTH

NEW RELEASED ECN NO. KOR2003-0193 DRWN: C.B.CHIN 03/01/20 CHK: W.Y.YANG APPR: C.W.LEE	QUALITY SYMBOLS MAJOR $\nabla = 0$ CRITICAL $\nabla C = 0$	GENERAL TOLERANCES: (UNLESS SPECIFIED)		SCALE 5:1	DESIGN UNITS <input checked="" type="checkbox"/> mm <input type="checkbox"/> INCH	THIRD ANGLE <input checked="" type="checkbox"/> mm <input type="checkbox"/> INCH <input type="checkbox"/> mm <input type="checkbox"/> INCH	DIMENSIONS: <input type="checkbox"/> mm <input type="checkbox"/> INCH <input checked="" type="checkbox"/> mm ONLY	SHT REV
		4 PLACES $\pm 0.$ $\pm -$ 3 PLACES $\pm 0.$ $\pm -$ 2 PLACES $\pm 0.30$ $\pm -$ 1 PLACE $\pm 0.30$ $\pm -$	DRAWN BY & DATE C.B.CHIN 02/09/09	TITLE: .250 MP-LOCK REC' TERMINAL FOR SLEEVE			SHEET NO. 1 OF 1	
		ANGULAR: $\pm 3^\circ$	CHECKED BY & DATE W.Y.YANG 02/09/09	MOLEX INCORPORATED			REVISE ON CAD ONLY	
		DRAFT WHERE APPLICABLE MUST REMAIN WITHIN DIMENSIONS	APPROVED BY & DATE C.W.LEE 02/09/09	CAD FILENAME S57989AA.MI	MATERIAL NO. SEE TABLE	DRAWING NO. SD-57989-001	SIZE B	

8 7 6 5 4 3 2 1 KOREA MX-A3